



THE PROGRESS REPORT OF REBUILDING OF
MANIMANDAPA PATI SOUTH
AT PATAN DARBAR SQUARE

A project of the
KATHMANDU VALLEY PRESERVATION TRUST
in Cooperation with
DEPARTMENT OF ARCHAEOLOGY

Funded by the
SOUTH ASIA INSTITUTE - HEIDELBERG UNIVERSITY
and
PRIVATE DONORS

June 2016

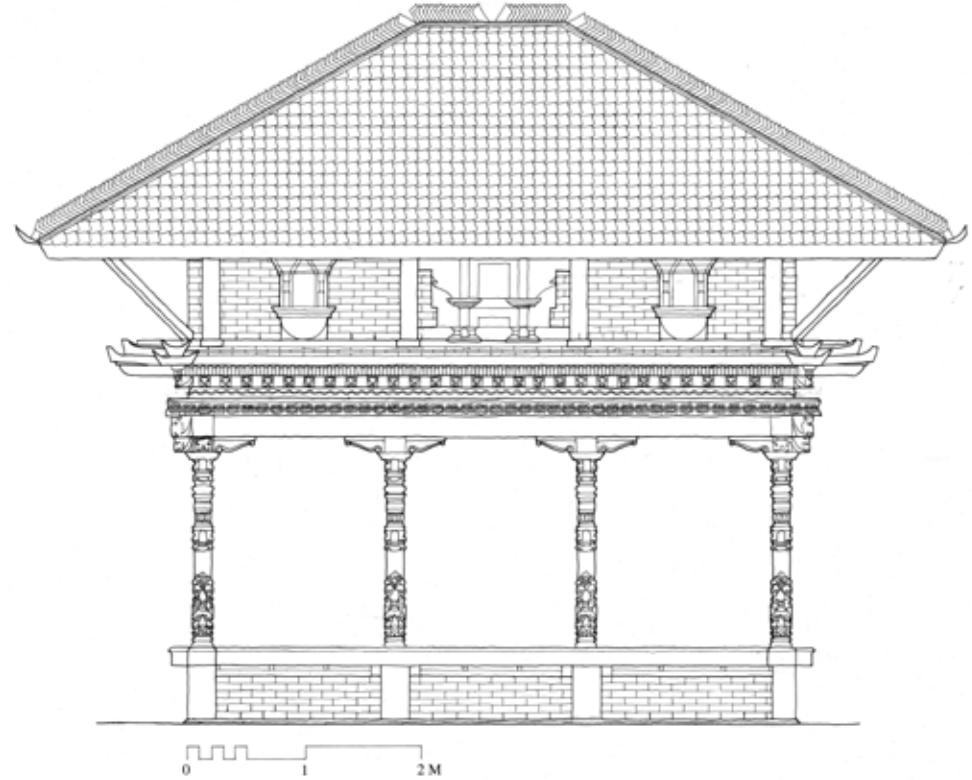
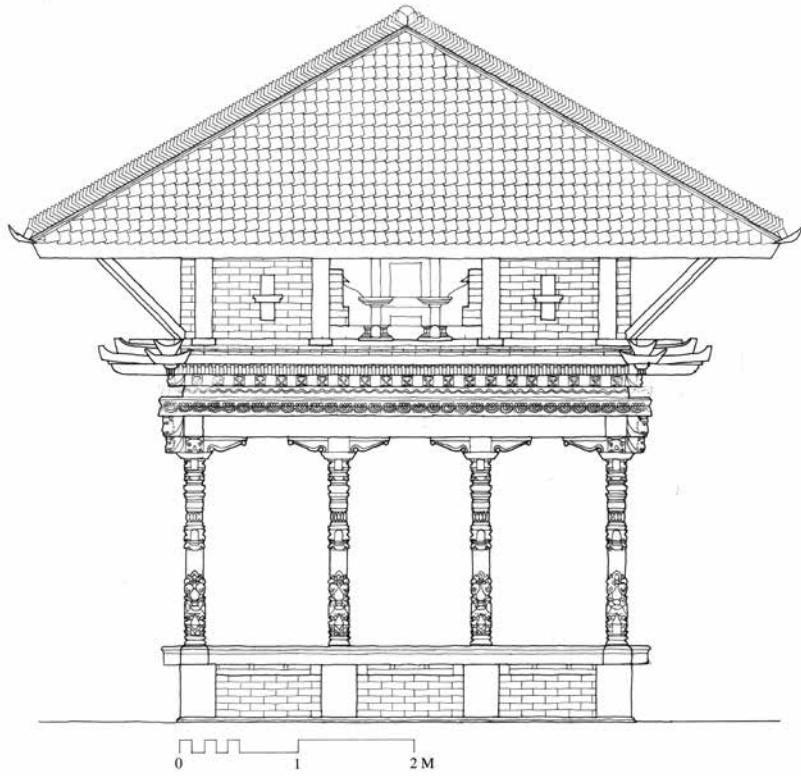


Manimandapa Pati South | March 28, 2016
Parts of cornices that were damaged from April 25, 2015 devastating earthquake were replicated and repaired for rebuilding. Repaired parts are in light color.



Manimandapa Pati South | March 28, 2016
Carved columns that got deteriorated by time and damaged during the devastating earthquake of April 25, 2015 were replicated, repaired and strengthened for rebuilding the Pati.





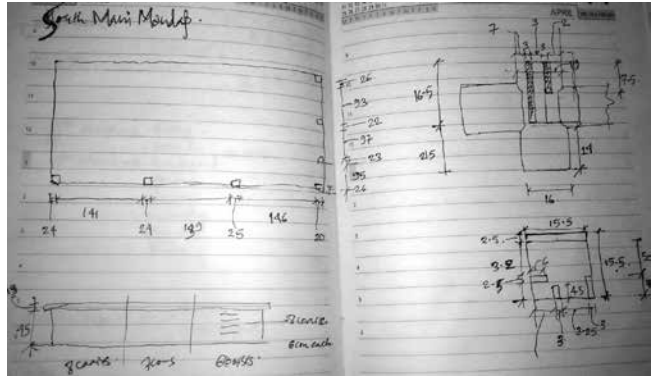
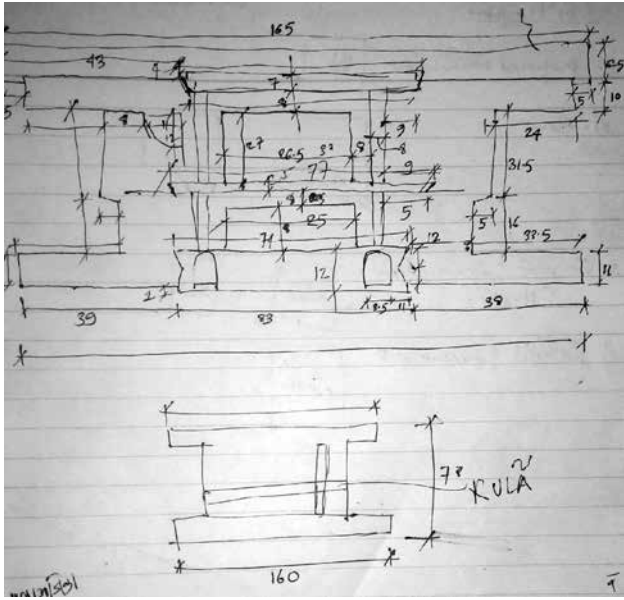
Manimandapa Pati South | April 01, 2016
South North and East West elevation drawings are made by hand as part of documentation.





Manimandapa Pati South | April 06 2016
The windows that were cleaned and stored were assembled to identify the missing parts for replication and repair work.





Manimandapa Pati South | April 08 2016
Detailed measurements of windows and floor plans were carried out at storeroom and site.



Manimandapa Pati South |
Carpenter adding tenon to the repaired pillar. Stone mason chiseling and sizing the stone for making quarter round (*nagol*) on the top edge.





Manimandapa Pati South | April 24 & 25, 2016
Ground floor of the Pati was excavated and trash cleared from site. Former Prime Minister Mr. Puspa Kamal Dahal (Prachanda) inaugurated the rebuilding of Pati by laying foundation brick on northeast corner on April 25, 2016. This inauguration initiated the over all reconstruction of monuments and houses that was destroyed by devastating earthquake of April 25, 2015.



Manimandapa Pati South | April 25 & 29, 2016
Woodcarvers replicating the missing parts of the windows of the Pati such as pillar and *kulah*.



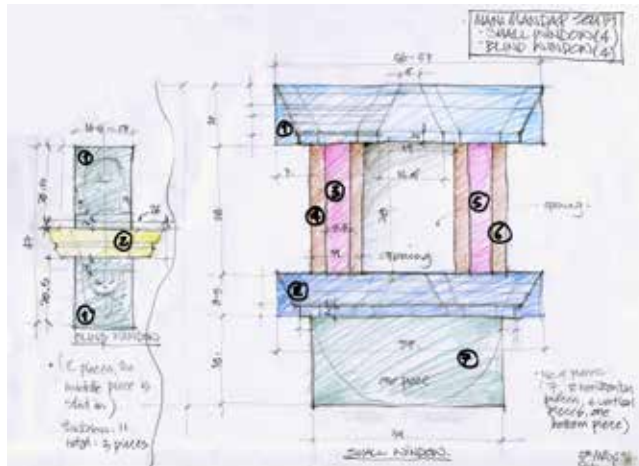
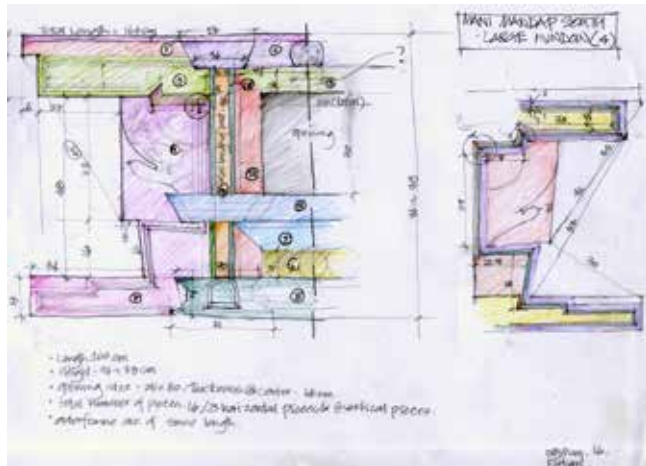


Manimandapa Pati South | May 02 and 05, 2016
Woodcarvers replicating the window cornice *kulah*.



Manimandapa Pati South | May 05, 2016
Broken *kulah* (cornice) of the window is being joined with the stainless steel plate and screws. Steel plates are used only for joining the completely broken pieces only.





Manimandapa Pati South | May 02, 2016
Detail measurement of different sized windows continued at site for making drawings and documentation.



Manimandapa Pati South | May 05, 2016
Stone mason making quarter round (*nagol*) by chiseling the stone on top edge.





Manimandapa Pati South | May 08, 2016
Carpenters and woodcarvers (Tirtha Ram Silpakar and friends) assembling one of the four large windows after damaged parts were replicated and repaired.



Manimandapa Pati South | May 08 & 12, 2016
Later period brick pavement removed and excavation was carried out around the Pati's plinth to check the condition of foundation where the original brick and stone nagol (bead) were discovered and now it is exposed.





Manimandapa Pati South | May 17 & 20, 2016
The repaired and retrofitted cornices of all four side during and after completely assembled.



Manimandapa Pati South | May 17 & 20, 2016
Woodcarver Hari Prasad Silpakar replicating the deity as per the original large window's *kulan* and carpenter repairing the central column.





Manimandapa Pati South | May 24, 2016
Carpenter repairing and retrofitting the capital (*meth*) of the column using the traditional material wood including bamboo pegs. Woodcarver replicating the window cornice *kulah*.





Manimandapa Pati South | May 30, 2016
Repairing, replicating and retrofitting of the central column capital (*meth*) are ongoing.



Manimandapa Pati South | May 29 & June 01, 2016
A window bracket of the south pati is being replicated including cornice (*kulah*) and window assembling.





Manimandapa Pati South | June 07, 2016
Metal fencing is being initiated by installing plate on ground erecting square pipe post.



Manimandapa Pati South | June 21, 2016
Building of metal fencing completed around the Pati including red oxide painting.

